



* £280,000 - £300,000 * No Onward Chain * Spacious three-bedroom terraced home offering character features, generous living accommodation, and a large rear garden, all positioned within a convenient Westcliff-on-Sea location.

- Three Bedroom
- Bay Fronted Lounge/Diner
- Feature Fireplace
- Good-Sized Kitchen
- Three Piece Shower Room
- Bay Fronted Master Bedroom
- Two Further Double Bedrooms
- Generous Rear Garden
- Double Glazing
- Gas Central Heating

Fairfax Drive

Westcliff-on-Sea

£280,000

Guide Price



Fairfax Drive



This well-proportioned terraced house provides comfortable family living throughout. The property opens with an entrance hall leading into a bay-fronted lounge/diner, complete with a feature fireplace, access to storage, and a door opening onto the rear garden. The reception space also flows into a good-sized kitchen, which in turn leads to a modern three-piece shower room. To the first floor, the landing provides loft access and leads to a bay-fronted master bedroom, alongside two further double bedrooms. Externally, the property benefits from a generous laid-to-lawn rear garden, ideal for families and outdoor entertaining. Additional features include double glazing and gas central heating.

Situated on Fairfax Drive in Westcliff-on-Sea, the property falls within the catchment area for The Westborough School and Chase High School, while also being close to highly regarded grammar schools. The home is conveniently positioned near the A127, bus links, local train lines, and London Road, as well as parks, amenities, and Southend Hospital, making it ideal for commuters and families alike.

Three Bedroom Terraced House

Entrance Hall

Lounge/Diner
23'5 x 10'6

Kitchen
9'0 x 8'9

Shower Room
8'11 x 3'9

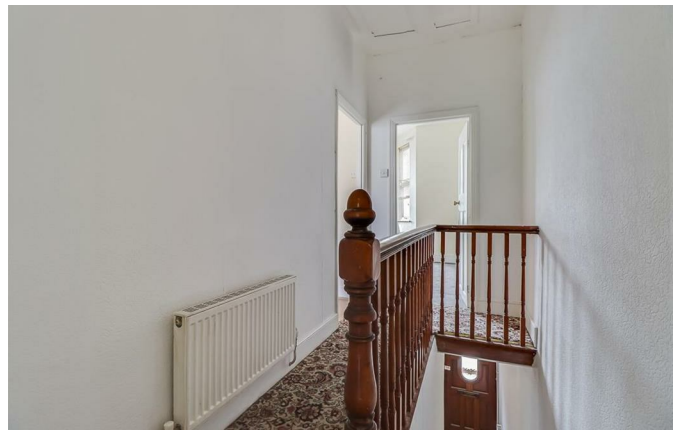
Landing

Bedroom One
13'2 x 12'5

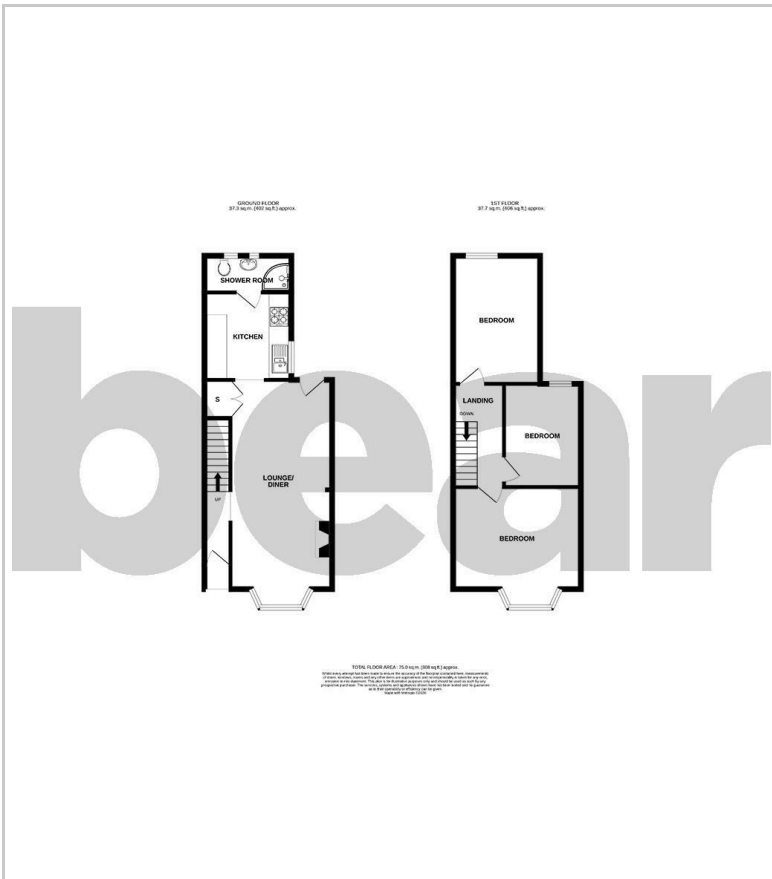
Bedroom Two
13'2 x 8'8

Bedroom Three
10'6 x 7'11

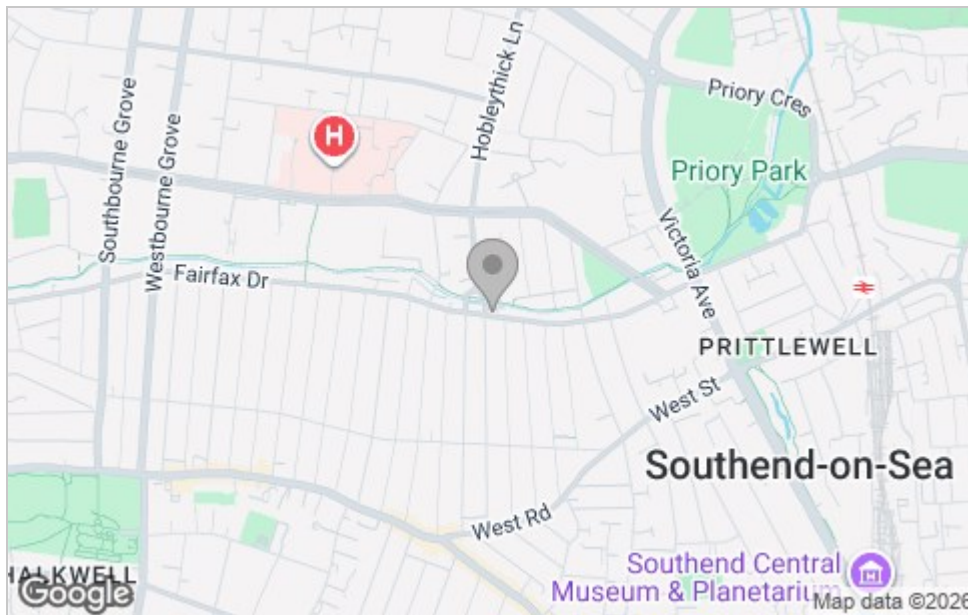
Garden



Floor Plan



Area Map



Viewing

Please contact our Southend-on-Sea Office on 01702 811211 if you wish to arrange a viewing appointment for this property or require further information.

These particulars, whilst believed to be accurate are set out as a general outline only for guidance and do not constitute any part of an offer or contract. Intending purchasers should not rely on them as statements of representation of fact, but must satisfy themselves by inspection or otherwise as to their accuracy. No person in this firm's employment has the authority to make or give any representation or warranty in respect of the property.

204 Woodgrange Drive, Southend-on-Sea, Essex, SS1 2SJ

Office: 01702 811211 info@bearestateagents.co.uk <https://www.bearestateagents.co.uk>

Energy Efficiency Graph

